

OPERATOR'S MANUAL

612280-X-E

INCLUDING: OPERATION, INSTALLATION & MAINTENANCE

RELEASED: 1-30-80

REVISED: 9-5-95

INCLUDE 6641X-X AIR MOTOR, FORM 3637-2 GENERAL INFORMATION SHEET, 636075 SWIVEL, 636103 CONTROL HANDLE

(REV.G) IPP/PSE

612280-X-E

PORTABLE CHASSIS LUBRICATING PUMP

35-LB. Container

IMPORTANT: READ THIS MANUAL CAREFULLY BEFORE INSTALLING, OPERATING OR SERVICING THIS EQUIPMENT.

SERVICE KITS

- Use only genuine ARO® replacement parts to assure compatible pressure rating and longest service life.
- 637066-B for general repair of the Air Motor section.
- 637021 for general repair of the Lower Pump section.

GENERAL DESCRIPTION

This air operated lubrication pump is well suited for portable chassis lubrication applications. It includes a 35-pound size container, follower plate, a full-opening cover, a hose/adaptor assembly and it develops up to 7,500 psi (517 bar).

OPERATION

⚠ WARNING Refer to general information sheet for additional safety precautions and important information.

⚠ WARNING HIGH PRESSURE DEVICE: Improper usage of equipment could result in serious injury. The possibility of injection into the flesh is a potential hazard. Never allow any part of the human body to come in front of or in direct contact with the material outlet.

An injection injury can be serious! If injection should occur, contact a qualified physician for immediate treatment of such injuries.

DO NOT EXCEED MAXIMUM WORKING PRESSURE OF 7,500 P.S.I. (517 BAR) AT 150 P.S.I. (10.3 BAR) AIR PRESSURE.

After the pump has been placed in a full container of grease, connect air to air motor inlet and pressurize pump. Pump will cycle until it is primed. To help pump prime, depress lever on grease gun a couple of times.

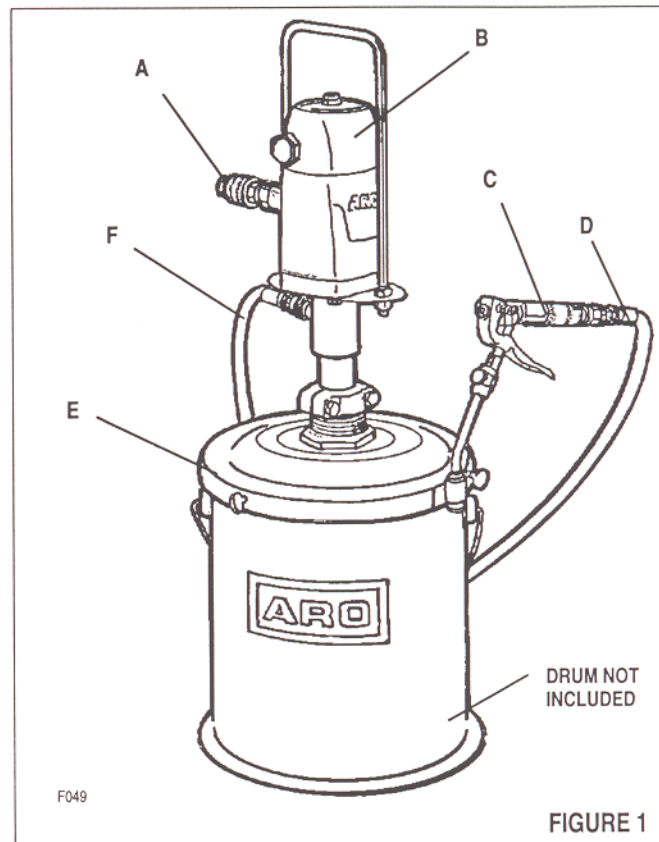
Note: When using grease gun, do not pull gun fitting straight off connection. Move gun until coupler is above 45 degree angle to fitting and then pull off. This will greatly increase the life of the coupler.

MAINTENANCE

Note: Use only genuine ARO replacement parts to assure compatible pressure rating.

Disassembly should be done on a clean work bench with clean cloths.

Caution should be used at all times to keep the material covered and free from contamination which could damage the piston rod assembly.



MAJOR COMPONENTS CHECK LIST

ITEM	Description	(Qty)	Part No.
A	Coupler	(1)	210
B	Basic Pump	(1)	66650
C	Control Handle	(1)	636103
D	Swivel	(1)	636075
E	Cover Assembly	(1)	60790
F	10 Foot Hose	(1)	624201-10

THE ARO CORPORATION • ONE ARO CENTER • BRYAN, OHIO 43506-0151

© (419) 636-4242 • FAX (419) 636-2115
©1995 THE ARO CORPORATION • PRINTED IN U.S.A.



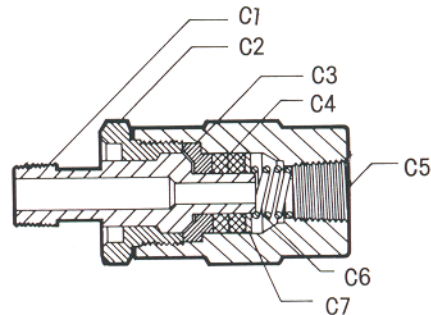
Part of worldwide Ingersoll-Rand

PARTS LIST

ITEM	Description	(Qty)	Part No.
1	Connector	(1)	2608
2	Handle	(1)	90272
3	Nut	(4)	Y12-6-N
4	Bushing	(1)	Y45-104-C
5	Swivel	(1)	2085
6	Nipple	(1)	676
7	Follower Plate	(1)	640095-2-B
8	Thumb Screw (Part of 60870 Cover)	(3)	94078

ITEM	Description	(Qty)	Part No.
9	Bung Adapter	(1)	3927
10	Screw	(2)	Y6-67-C
11	Washer	(2)	Y14-616
12	Gasket	(1)	70834
13	Plate	(1)	76059
14	Washer	(2)	F15-3-C

2085 1/8" STRAIGHT SWIVEL			
ITEM	Description	(Qty)	Part No.
C1	Stem	(1)	4309
C2	Gland	(1)	2571
C3	Spacer	(1)	2572
C4	Packing	(2)	F26-25
C5	Sleeve	(1)	2570
C6	Spring	(1)	F51-62
C7	Washer	(1)	F15-45



F050

FIGURE 2

TROUBLE SHOOTING

Should pump operate, but dispense little or no lubricant, check for:

- Inadequate supply of lubricant.
- Improper feeding of lubricant into pump. This condition is known as "channeling" and is often indicated by light-colored frothy grease coming from control handle. A follower plate is included with unit to help prevent this situation.
- Dirt or foreign matter between 60940 Foot Valve and 6797 Valve Seat or other causes which may be preventing foot valve from properly seating on downstroke of piston.

612280-E
612280-1-E

PORTABLE CHASSIS PUMP

NOTE: Model 612280-1-E includes all that is shown plus a Y27-2-C Nipple and 128121-100 F-R-L. Connect Nipple & F-R-L to air inlet.

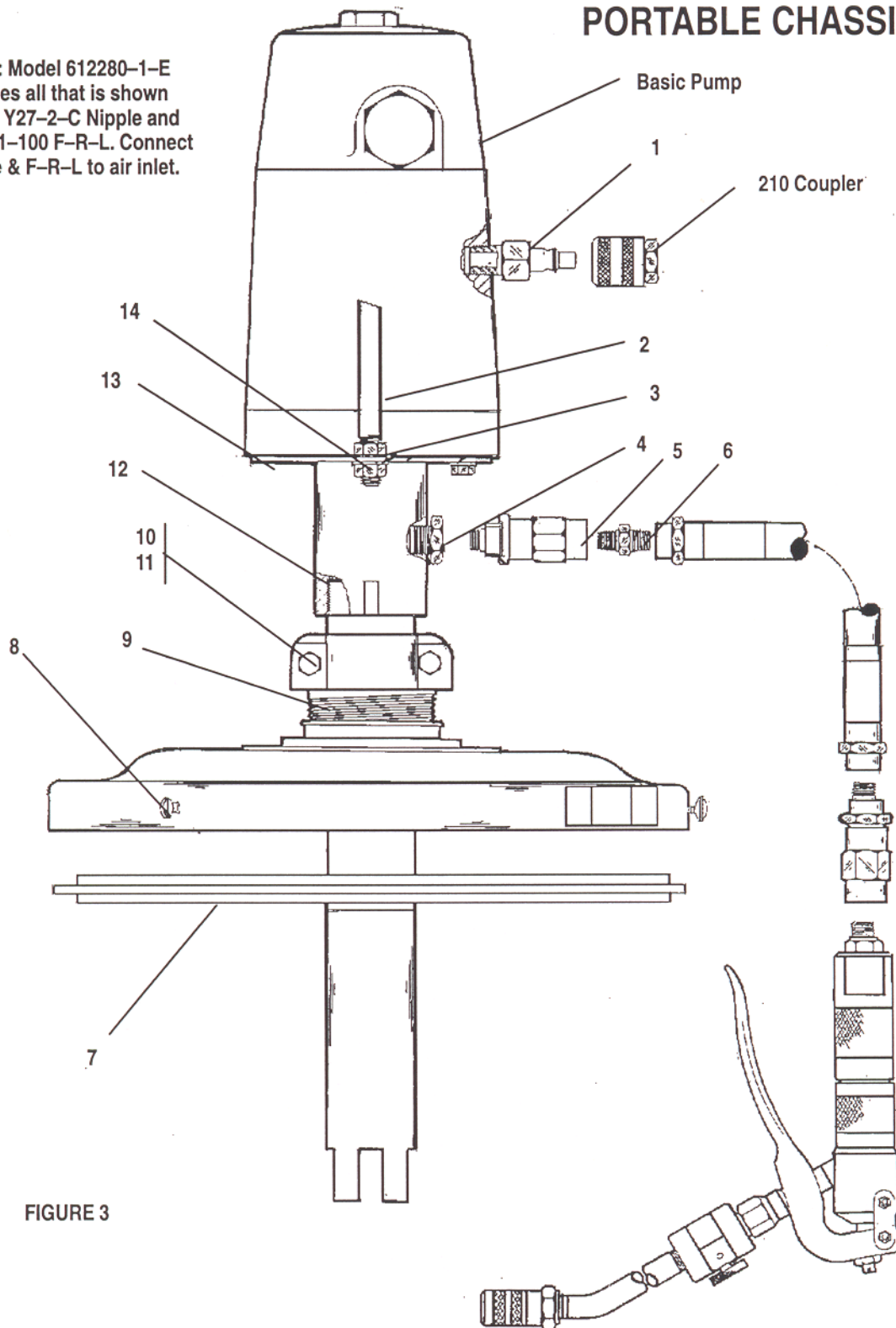


FIGURE 3

F051

PARTS LIST

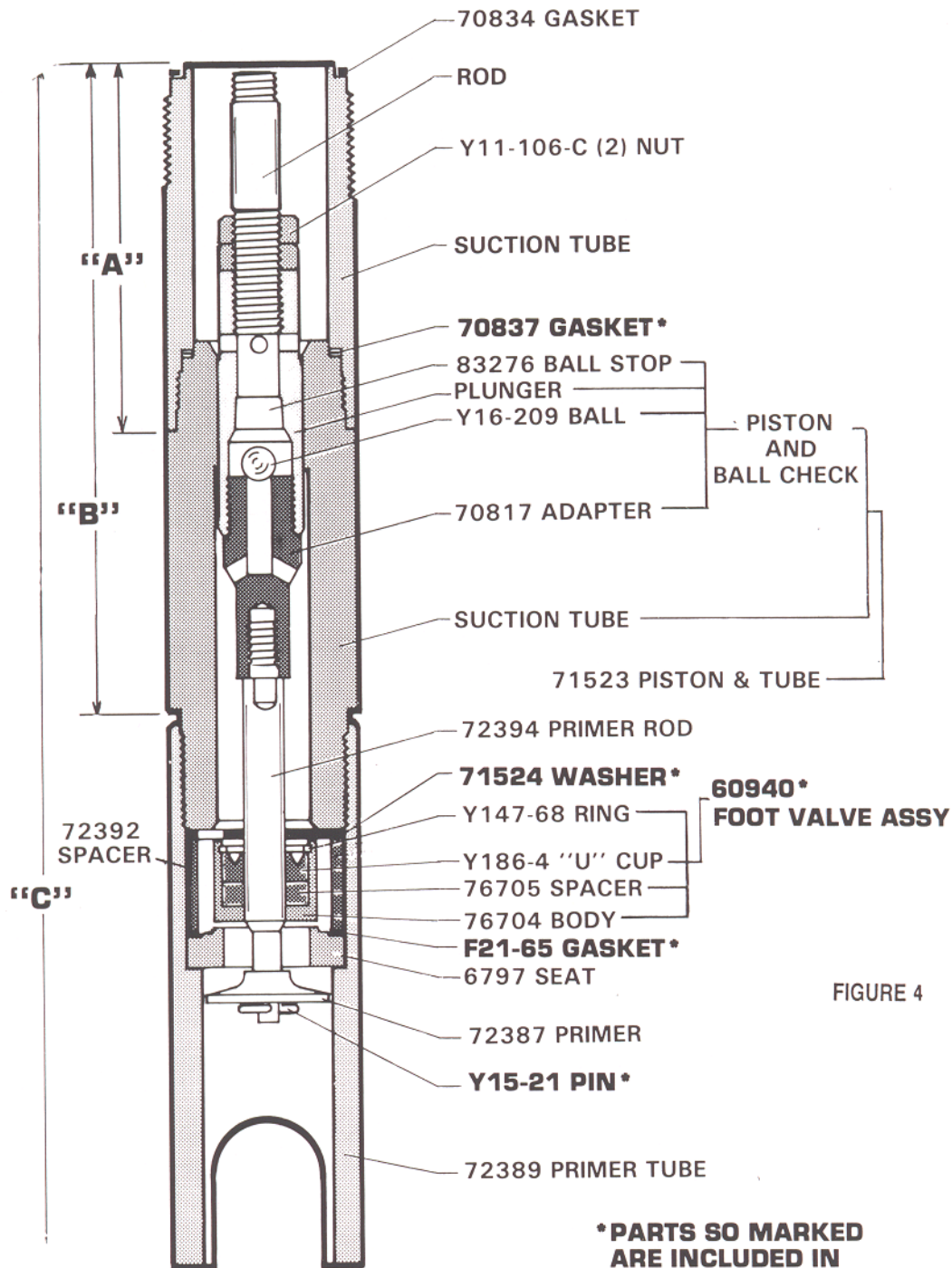


FIGURE 4

***PARTS SO MARKED
ARE INCLUDED IN
637021 SERVICE KIT**

TYPE	ROD	"A"	TUBE	"B"	OVERALL LENGTH "C"
35 #PAIL	79240	4 7/8	79239	9 5/16	18 3/16"

F032



Part of worldwide Ingersoll-Rand

PN 97999-085